

# Service Bulletin

## GE PROPRIETARY INFORMATION

The information contained in this document is General Electric Company proprietary information and is disclosed in confidence. It is the property of GE and shall not be used, disclosed to others or reproduced without the express written consent of GE, including but not limited to use for the creation, manufacture, development or derivation of any repairs, modifications, spare parts, designs or configuration changes, or for obtaining government or regulatory approval to do so. If consent is given for reproduction in whole or in part, this notice and the notice set forth on each page of this document shall appear in any such reproduction in whole or in part.

Engine type **J612, J616, J620 and J624**

Subject **Engine lubricating oil system**  
**Oil filter exchange at the end of filter lifetime**



**SB-099 | June 20, 2014**

Peter SANDOR  
Jenbacher gas engines

T +43 5244 600-2378  
F +43 5244 600-42378

[peter.sandor@ge.com](mailto:peter.sandor@ge.com)  
[www.ge-distributedpower.com](http://www.ge-distributedpower.com)



Service Bulletin SB-099 deals with the mandatory oil filter exchange at the end of filter lifetime.

## AFFECTED ENGINES / SCOPE OF THIS BULLETIN

Type J612, J616, J620 and J624 engines, Version F, G and H (engines with oil filter differential pressure measurement).

## DESCRIPTION OF THE CONTENT / PURPOSE OF THIS BULLETIN

The increase of outlet pressure on the main oil pump due to blocked oil filter can lead to additional forces on it and therefore to consequential damage. Once the system reaches a differential pressure >3bar, there are two types of messages shown:

- **DIA.NE version V3.40.0 or higher:**  
A1059 – Oil filter differential pressure high
- **Older DIA.NE versions:**  
W3416 – Oil filter plugged – No engine start

Ignoring these messages and keeping the engine running without changing the oil filter can increase the risk of oil pump damages. **Therefore it is required to exchange the oil filters immediately after above messages are displayed.**

## RELEVANT PART NUMBERS

PART NUMBER	DESCRIPTION	REMARKS
631265	Filter Cartridge for Type J6xx engines	Used as spare part
245488	Filter Cartridge for Type J6xx engines	Used for new units

Table 01: Relevant part numbers

## REQUIRED ACTION

- Change oil filter on differential pressure warning/alarm on DIA.NE (latest at Code W3416 or A1059)
  - Shut down the engine in accordance with TA 1100-0105
  - Observe the Safety Instructions in TA 2300-0005
  - Change oil filter element in accordance with W 8038 M6 and W 8038 M6h
- Make sure that the lubricating oil pressure in your plant is between 3.8 and a maximum of 4bar
  - Adjust the lubricating oil pressure as necessary in accordance with Maintenance Work W 8046 M6

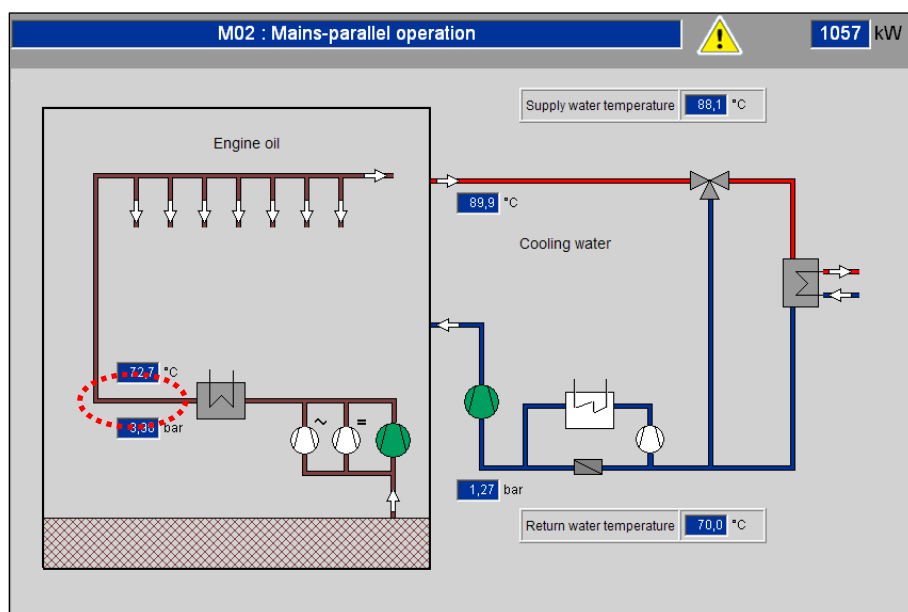


Fig. 01: Lubricating oil pressure display in the engine control system



## RELEVANT DOCUMENTS

All the relevant instructions are part of the plant documentation handed over to every customer on delivery of an engine. The latest versions of documents referred to here can be downloaded from the Jenbacher web portal at <http://information.jenbacher.com> under the heading 'Technical Knowledge Base'.

- Technical Instruction TA 1100-0105, Engine shut-down
- Technical Instruction TA 2300-0005, Safety instructions
- Maintenance Work W 8038 M6 / W 8038 M6h, Oil filter cartridge
- Maintenance Work W 8046 M6, Engine oil pump

## REVISION CODE

INDEX	DATE	DESCRIPTION / REVISION SUMMARY
01	Jun. 20, 2014	First version of this document

**Table 02:** Revision history